

About Gunnedah

Gunnedah is a quiet country town, with a population of approximately 10,000 people. It has all basic amenities such as schools, sporting fields, a swimming pool, movie theatre and hospital.



The shopping centre includes three supermarkets, banks, chemists, coffee shops, restaurants, bakery, Target, Best & Less etc. Tamworth is a larger regional city and is an hour's drive from the homestead.

There are beautiful national parks near Narrabri and Connabarabran (both about 90 minutes from Gunnedah). Gunnedah also boasts some unique local attractions such as the Waterways Wildlife Park (where you may actually get a chance to pat a koala) and the Lake Keepit recreation area.



A note from Richard & Kate

We have always been very thankful to God for giving us such a beautiful place to live.

We are also conscious that there are many who sacrifice a lot of worldly comfort in order to bring the gospel of Jesus to others.

Missionary friends have told us that they often struggle with adjusting back into western culture, particularly in the city. Both "Retreat" and Gunnedah offer an opportunity for gentle acclimatisation to life back in Australia.

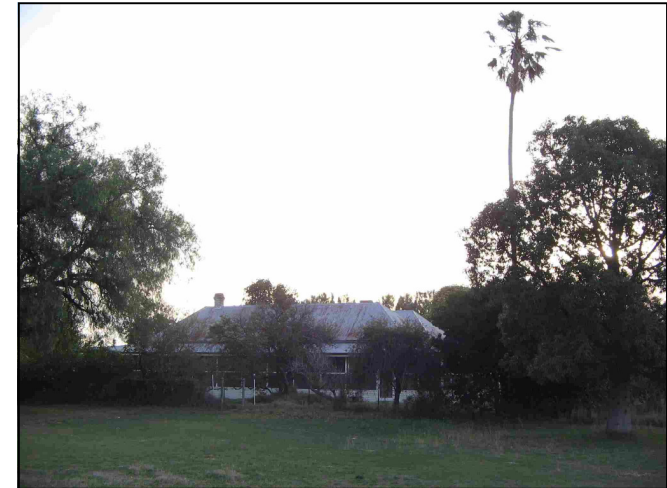
Now an opportunity has opened up for us (supported by many of our Christian friends) to share our "Retreat" with others.

For enquiries and bookings contact:

Richard & Kate Penrose
"Retreat"
2959 Wean Rd
Boggabri
NSW 2382
Ph 02 67432556
e-mail rkpenrose@activ8.net.au

This is a joint ministry with:
Christ Church Gunnedah
32 Elgin St
Ph 02 67420038
e-mail office@gunnedahanglican.org.au

The Retreat Homestead



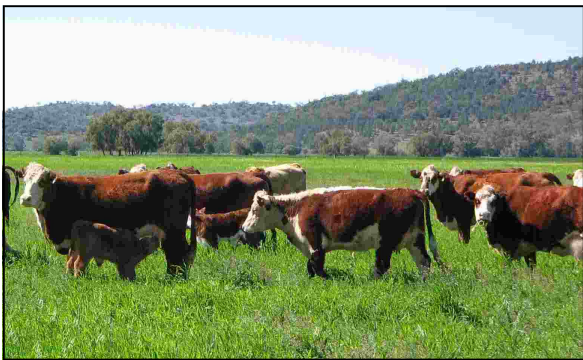
The perfect country escape for a short break, longer holiday or a home base during missionary home assignment...And it's FREE!



The Retreat Homestead was built over 100 years ago. It is located on a 1000 Hectare working cattle property 32km north of Gunnedah (aprox 5.5 hours north west of Sydney).



During your stay there may be the opportunity to participate in routine farm activities such as moving cattle, feeding weaners and collecting firewood. We also have 2 friendly cattle dogs and sometimes bottle-fed calves or lambs.



The Retreat Homestead is located in a tranquil setting, bordered on two sides by hills. There is plenty of room for walks and picnics. Our swimming pool is also available (by arrangement).

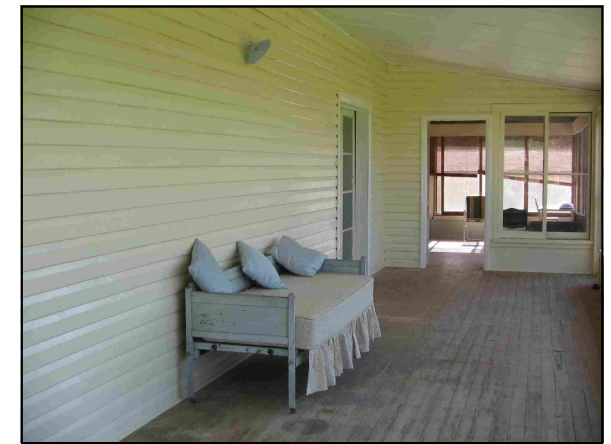
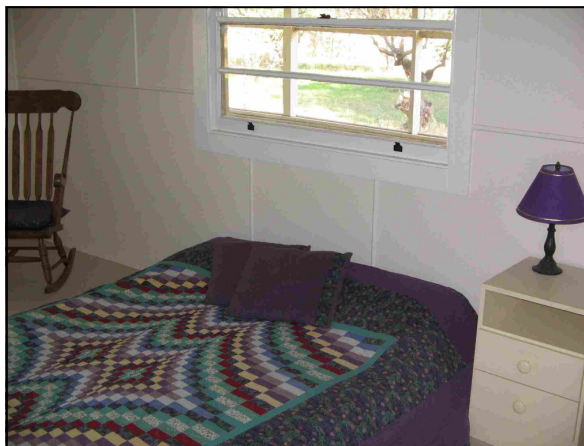
About the Homestead

The homestead is a fully furnished, child friendly, 5 bedroom house with 2 large living areas, gauzed verandahs on 3 sides and a large area of fenced garden with many established fruit trees and ample space for children to explore.



So far the kitchen, family room and 4 bedrooms have been completely renovated. All bedrooms have comfortable mattresses and there is linen available if needed.

The remainder of the house is clean and functional (renovations are continuing).



The homestead can be hot in the summer and cold in the winter. However, there is a reverse cycle air-conditioner in the family room, plus fans and plenty of warm bedding and electric blankets.

For your information

Accommodation at the Retreat Homestead is available free of charge for people involved in Christian ministry (eg missionaries, clergy, bible college students & lecturers, marriage enrichment retreats, etc).

Bookings may be made for both long-term and short stays.

Missionaries on home assignment who need the homestead for an extended period of time will be given first preference.

The Retreat Homestead is a joint ministry of the Gunnedah Anglican Church and the Penrose family.

This ministry has also been generously supported by others both from Gunnedah and further afield.